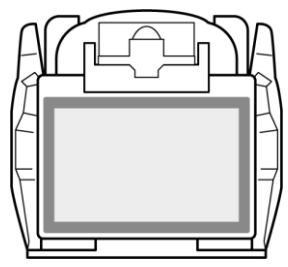
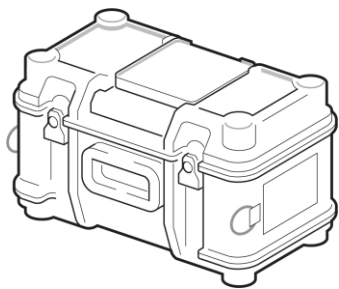


Core Alignment Fusion Splicer Quick Reference Guide

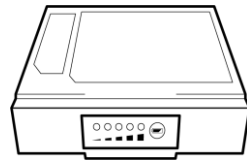
What's included



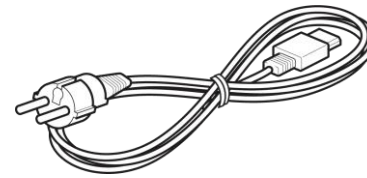
Fusion splicer



Carrying case



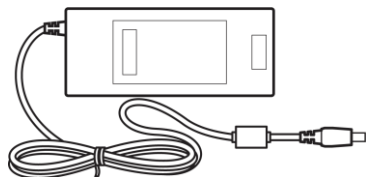
Battery pack



Power cord



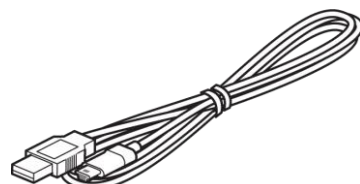
Quick reference
guide



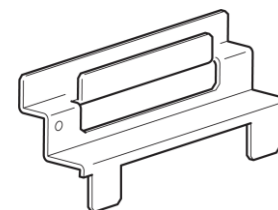
AC adapter



Electrodes



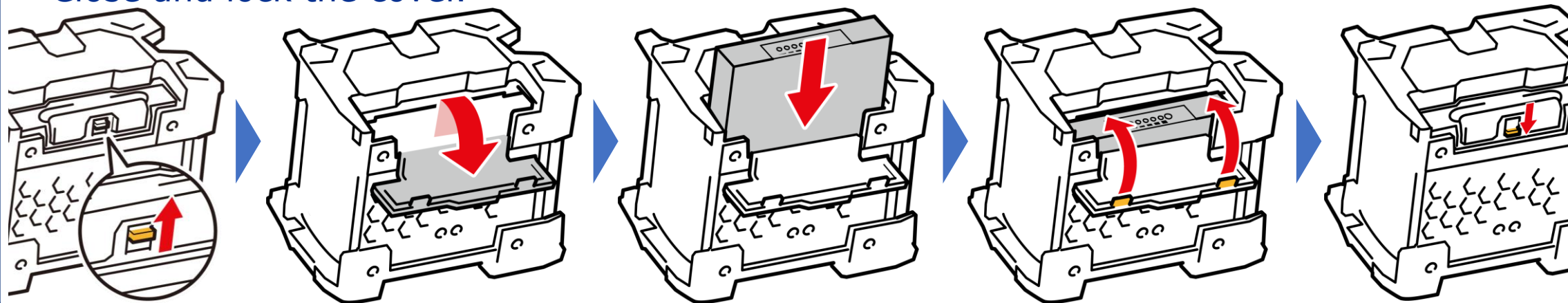
USB cable



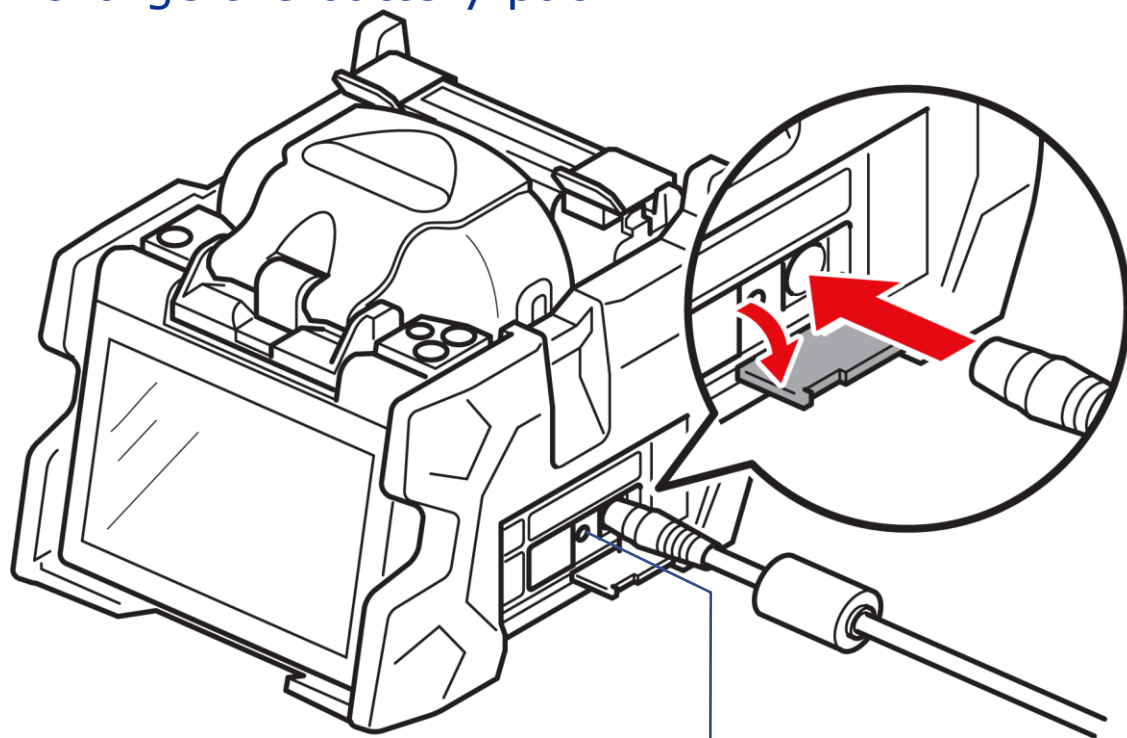
Cooling tray

Getting started

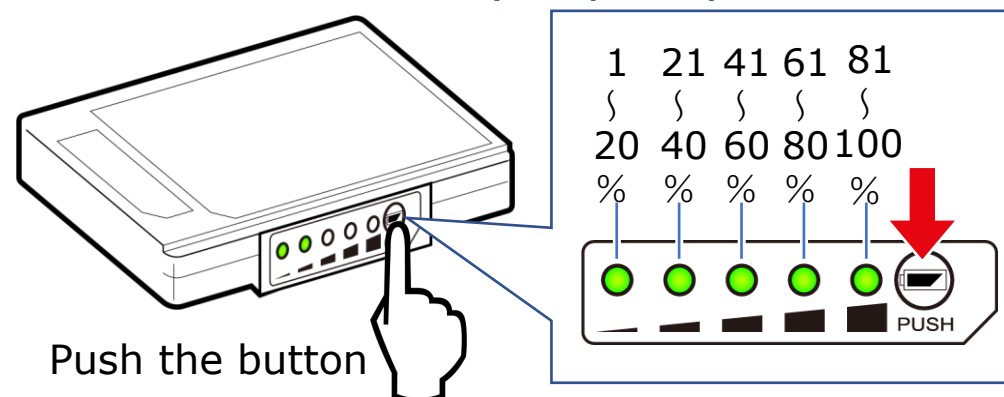
- 1 Open the battery slot cover located at the bottom of the splicer and insert the battery pack. Close and lock the cover.



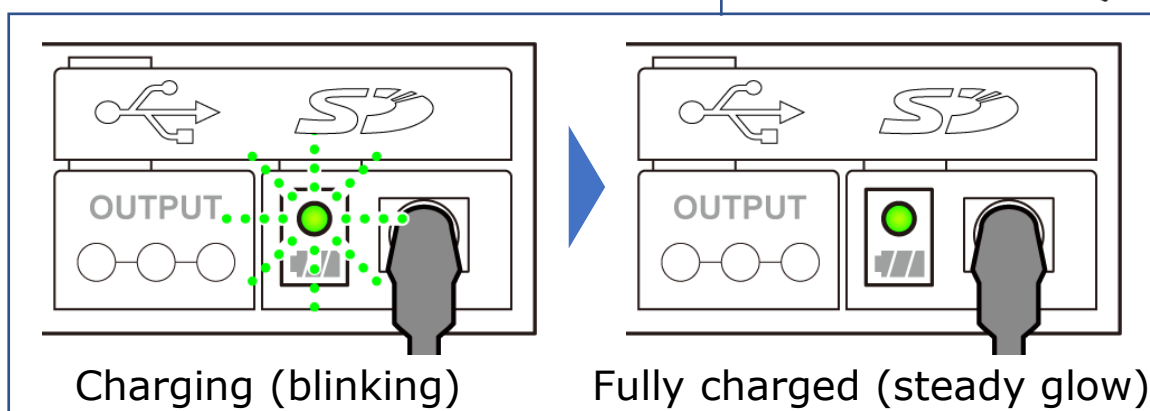
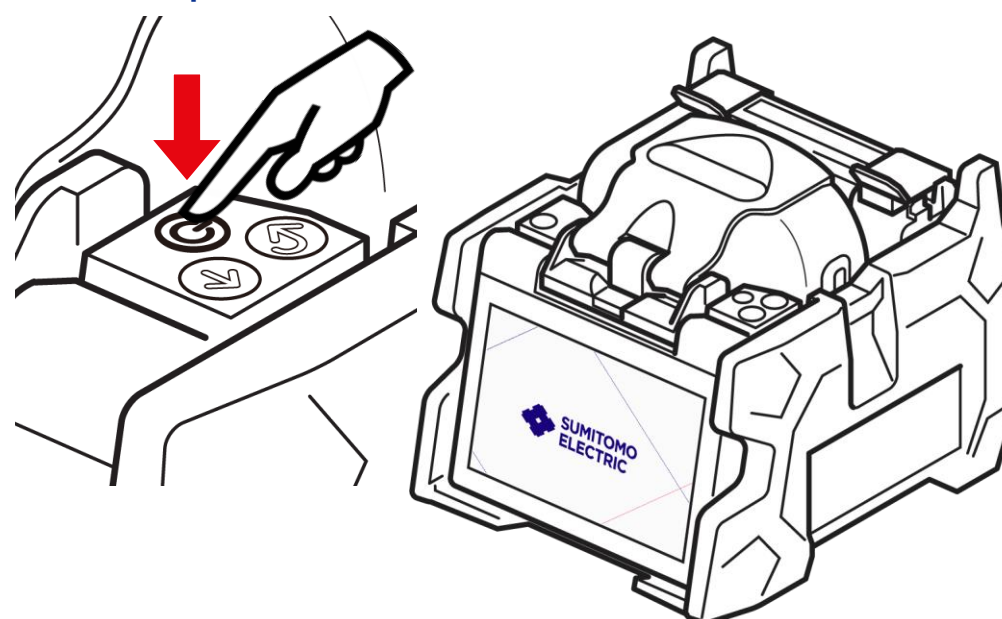
- 2 Connect the AC adapter to the splicer to charge the battery pack.



- How to check battery capacity left



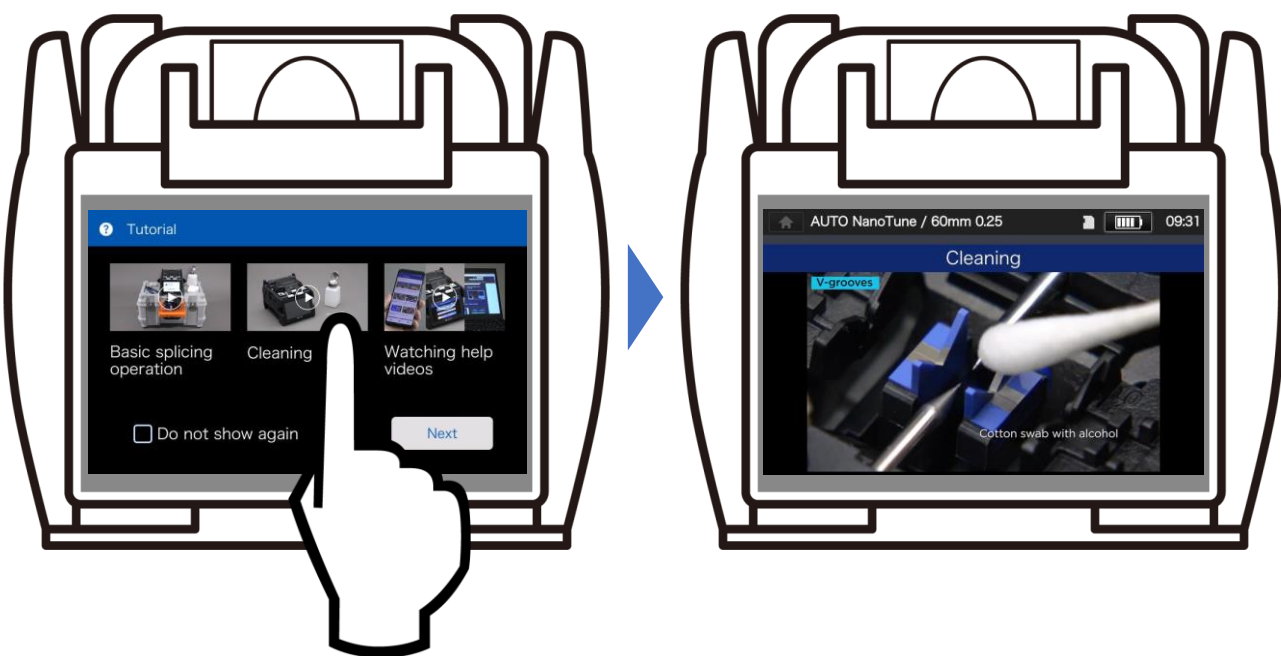
- 3 Press the POWER key.
- 4 The splicer turns on.



5 The splicer shows thumbnails of tutorial videos.



6 Tap the thumbnail to play the video.



Utilizing Help Videos

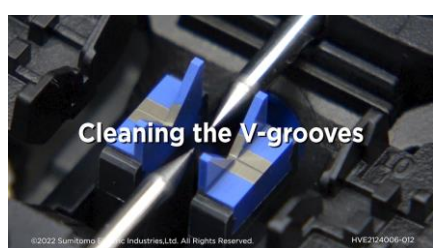
On the splicer



Also available online



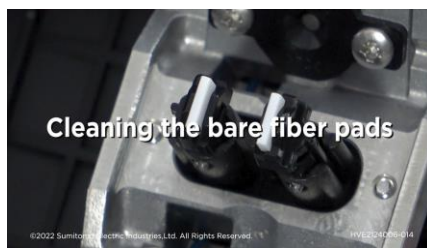
Cleaning



V-grooves



Microscope lens protection glass



Bare fiber pads



LEDs



Heat shrink oven

Consumables

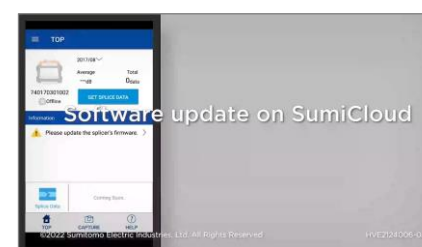


Replacing the electrodes

Software update



On a computer



On SumiCloud

