

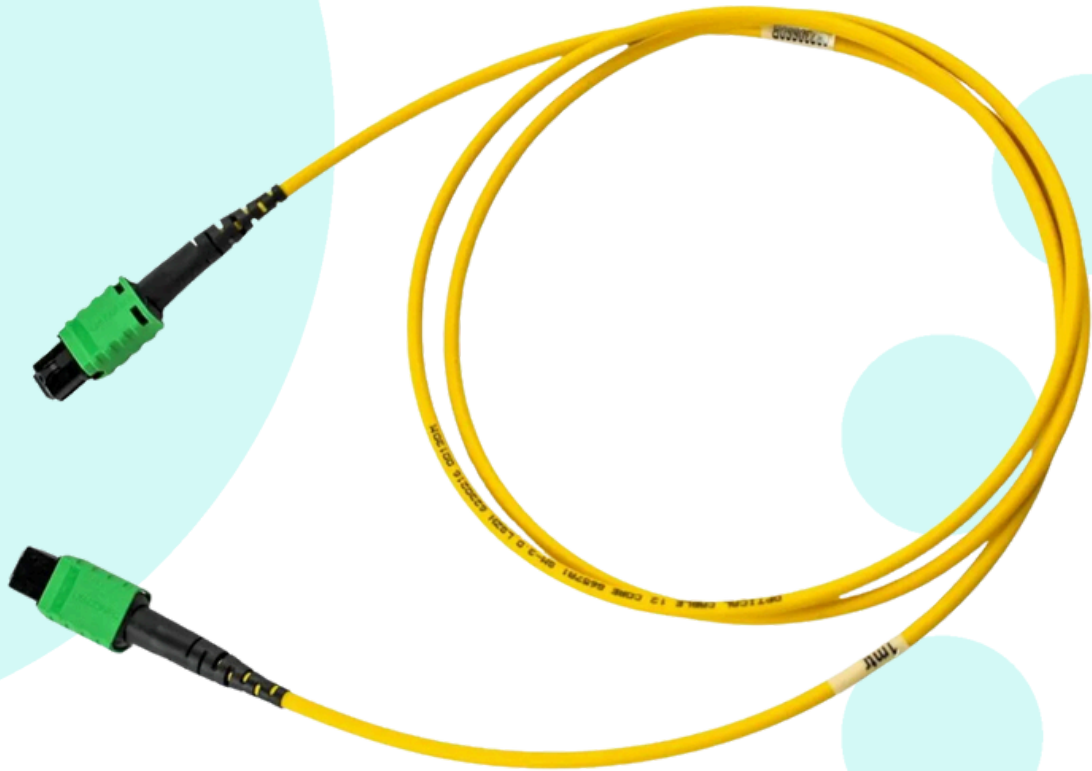


# MTP® LITE TRUNK ASSEMBLIES

SM

OM3

OM4



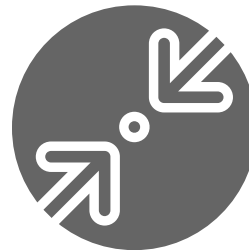
MTP® Lite Trunk Assemblies consist of a lightweight single jacket construction, designed to optimise space saving



Bespoke UK  
Manufacture



High Density  
Connectors



Space Saving  
Design



Rapid Deployment  
(Plug and Play)

# MTP® LITE TRUNK ASSEMBLIES



MTP® Lite Trunk Cable Assemblies consist of a lightweight single jacket construction, designed to optimise space saving of trunk patching. The 12F cable and the 24F cable are both at 3mm. These compact cables are packed with Kevlar® which provides the necessary endurance for routing and patching purposes, though best used within a Comms Room or Data Suite environment.

Only genuine US Conec branded MTP® PRO connectors are fitted to our cables with Elite MT ferrule, for those applications requiring the highest performance. These connectors provide exceptional benefits over the conventional MPO connectors, including patented floating ferrule design, patented elliptical, high precision guide pins, allowing rapid gender change and reversing polarity out in the field. Our Lite Trunk assemblies are manufactured in our state-of-the-art facility utilising equipment recommended by and personnel trained by US Conec.

The MTP® Lite Trunk assemblies facilitate rapid deployment of high density backbone cabling in data centres and other high fibre count environments, reducing network installation or reconfiguration time and cost. They are used to interconnect cassettes, panels or ruggedised MTP® Harness links.

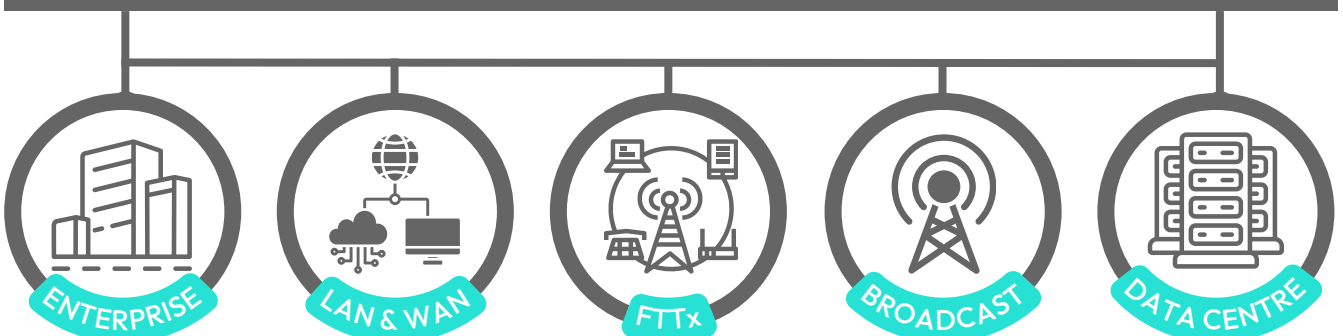
## FEATURES

- Simplistic Push/Pull boot design
- High density connectors
- Removable housing for field polarity change
- Elliptical guide pins are the key to accurate mating alignment
- Oval spring provides greater fibre clearance
- Uniform alignment across 24 x lanes

## BENEFITS

- Optimised space saving design
- Cost effective
- High density cabling with multi-fibre design
- Fully compatible with all MPO connectivity
- QSFP+ mated interface with the same fibre count
- Rapid deployment

## APPLICATIONS



**fibre optic assembly specialists**

VERSION 2 APRIL 2024



sales@leaderoptec.com



www.leaderoptec.com

# MTP® LITE TRUNK ASSEMBLIES



## SPECIFICATION

Element	Characteristic
Fibre (ISO/IEC 60793)	Single-mode: Yellow
	OM3: Aqua
	OM4: Heather Violet or Aqua
Cable (LSZH)	12F: 3mm Outer Jacket
	24F: 3mm Outer Jacket
Housing (MTP® PRO)	Single-mode: Green
	OM3: Aqua OM4: Heather Violet or Aqua
Polarity	A, B or C / Straight or Crossed
Temperature Range	-20 ~ +60°C
Crush Resistance	500N/100mm <sup>2</sup>
Weight	7.8 kg/km

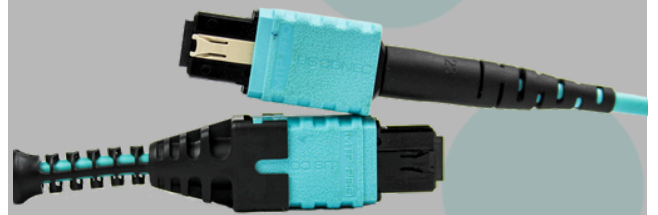
## INDUSTRY COMPLIANCE

Our MTP® Lite Trunk Assemblies comply with the following industry standards:

- Colour coding compliant to TIA/EIA-568-C.3 & ISO/IEC11801
- Connector specification to IEC-61754-7 & EIA/TIA-604-5
- LSZH jacket materials to IEC 60332 Parts 1 & 3
- Compliant to Directive 2002/95/EC (RoHS) and REACH SvHC
- The geometrical characteristics compliant to IEC-60793
- End Face Cleanliness compliant to IEC 61300-3-35

## MTP® PRO ENHANCEMENTS

- Field Polarity change
- Debris Reduction
- Field friendly gender configuration



## MTP® PRO CONNECTOR PERFORMANCE

Connector Mating	Insertion Loss Typical	Insertion Loss Max	Return Loss
MTP® PRO Multimode Elite	<0.12dB	<0.35dB	≥25dB
MTP® PRO Single-mode Elite	<0.12dB	<0.35dB	≥60dB

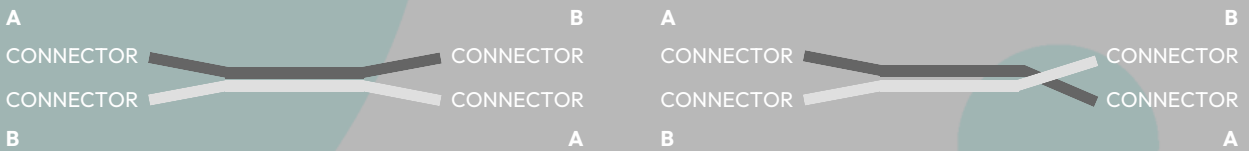
# MTP® LITE TRUNK ASSEMBLIES



## CONNECTIVITY METHODS

All the connectivity methods shown here have the same purpose: to ensure that the transmit port of one device is connected to the receive port on another device. Each method requires a specific combination for components to maintain the system polarity. These are outlined in the below table.

Method	Connector Type	Adapter Type	Patch Lead Type
A	MTP® PRO	Key Up - A - Key Down	One end A-to-B & other end A-to-A
B	MTP® PRO	Key Up - B - Key Up	A-to-B
C	MTP® PRO	Key Up - A - Key Down	A-to-B



\*Retro Polarity change from A-B or B-A is only applicable for MTP® Pro multi-mode connector due to MTP® PRO single mode connectors are Angle Polished.

## CERTIFICATES



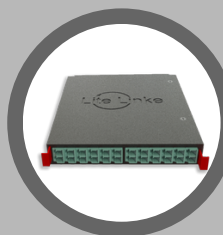
MTP® PRO is a registered trademark of US Conec.  
Kevlar® is a registered Trademark of Dupont™

Lite Linke is the brand name for Leader Optec's Elite MTP® solutions

## COMPLEMENTARY PRODUCTS



MTP® HARNESS ASSEMBLIES



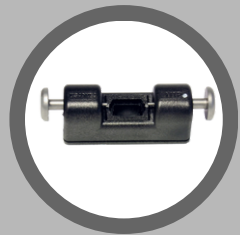
MTP® CONTAINMENT SOLUTIONS



MTP® CLEANING SOLUTIONS



MTP® TESTING ASSEMBLIES



MTP® HOUSING REMOVAL TOOL

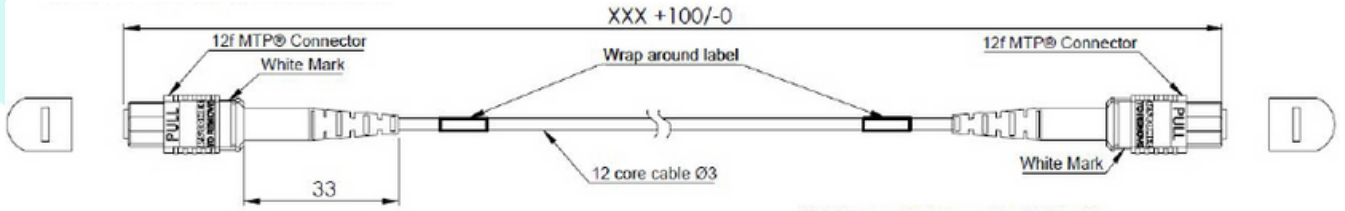
fibre optic assembly specialists

VERSION 2 APRIL 2024

# MTP® LITE TRUNK ASSEMBLIES



## MTP® LITE TRUNK 12F METHODS



Type A		
End A	Colour	End B
1	Blue	1
2	Orange	2
3	Green	3
4	Brown	4
5	Slate	5
6	White	6
7	Red	7
8	Black	8
9	Yellow	9
10	Violet	10
11	Pink	11
12	Aqua	12

Type B		
End A	Colour	End B
1	Blue	12
2	Orange	11
3	Green	10
4	Brown	9
5	Slate	8
6	White	7
7	Red	6
8	Black	5
9	Yellow	4
10	Violet	3
11	Pink	2
12	Aqua	1

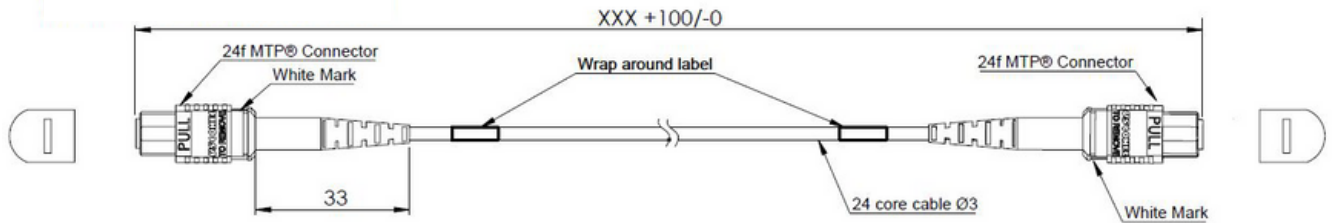
Type C		
End A	Colour	End B
1	Blue	2
2	Orange	1
3	Green	4
4	Brown	3
5	Slate	6
6	White	5
7	Red	8
8	Black	7
9	Yellow	10
10	Violet	9
11	Pink	12
12	Aqua	11



# MTP® LITE TRUNK ASSEMBLIES



## MTP® TUFF TRUNK 24F METHODS



Type A (Crossed)			Type B			Type C			Straight		
End A	Colour	End B	End A	Colour	End B	End A	Colour	End B	End A	Colour	End B
1	Blue	13	1	Blue	24	1	Blue	14	1	Blue	1
2	Orange	14	2	Orange	23	2	Orange	13	2	Orange	2
3	Green	15	3	Green	22	3	Green	16	3	Green	3
4	Brown	16	4	Brown	21	4	Brown	15	4	Brown	4
5	Slate	17	5	Slate	20	5	Slate	18	5	Slate	5
6	White	18	6	White	19	6	White	17	6	White	6
7	Red	19	7	Red	18	7	Red	20	7	Red	7
8	Black	20	8	Black	17	8	Black	19	8	Black	8
9	Yellow	21	9	Yellow	16	9	Yellow	22	9	Yellow	9
10	Violet	22	10	Violet	15	10	Violet	21	10	Violet	10
11	Pink	23	11	Pink	14	11	Pink	24	11	Pink	11
12	Aqua	24	12	Aqua	13	12	Aqua	23	12	Aqua	12
13	-Blue-	1	13	-Blue-	12	13	-Blue-	2	13	-Blue-	13
14	-Orange-	2	14	-Orange-	11	14	-Orange-	1	14	-Orange-	14
15	-Green-	3	15	-Green-	10	15	-Green-	4	15	-Green-	15
16	-Brown-	4	16	-Brown-	9	16	-Brown-	3	16	-Brown-	16
17	-Slate-	5	17	-Slate-	8	17	-Slate-	6	17	-Slate-	17
18	-White-	6	18	-White-	7	18	-White-	5	18	-White-	18
19	-Red-	7	19	-Red-	6	19	-Red-	8	19	-Red-	19
20	-Black-	8	20	-Black-	5	20	-Black-	7	20	-Black-	20
21	-Yellow-	9	21	-Yellow-	4	21	-Yellow-	10	21	-Yellow-	21
22	-Violet-	10	22	-Violet-	3	22	-Violet-	9	22	-Violet-	22
23	-Pink-	11	23	-Pink-	2	23	-Pink-	12	23	-Pink-	23
24	-Aqua-	12	24	-Aqua-	1	24	-Aqua-	11	24	-Aqua-	24

